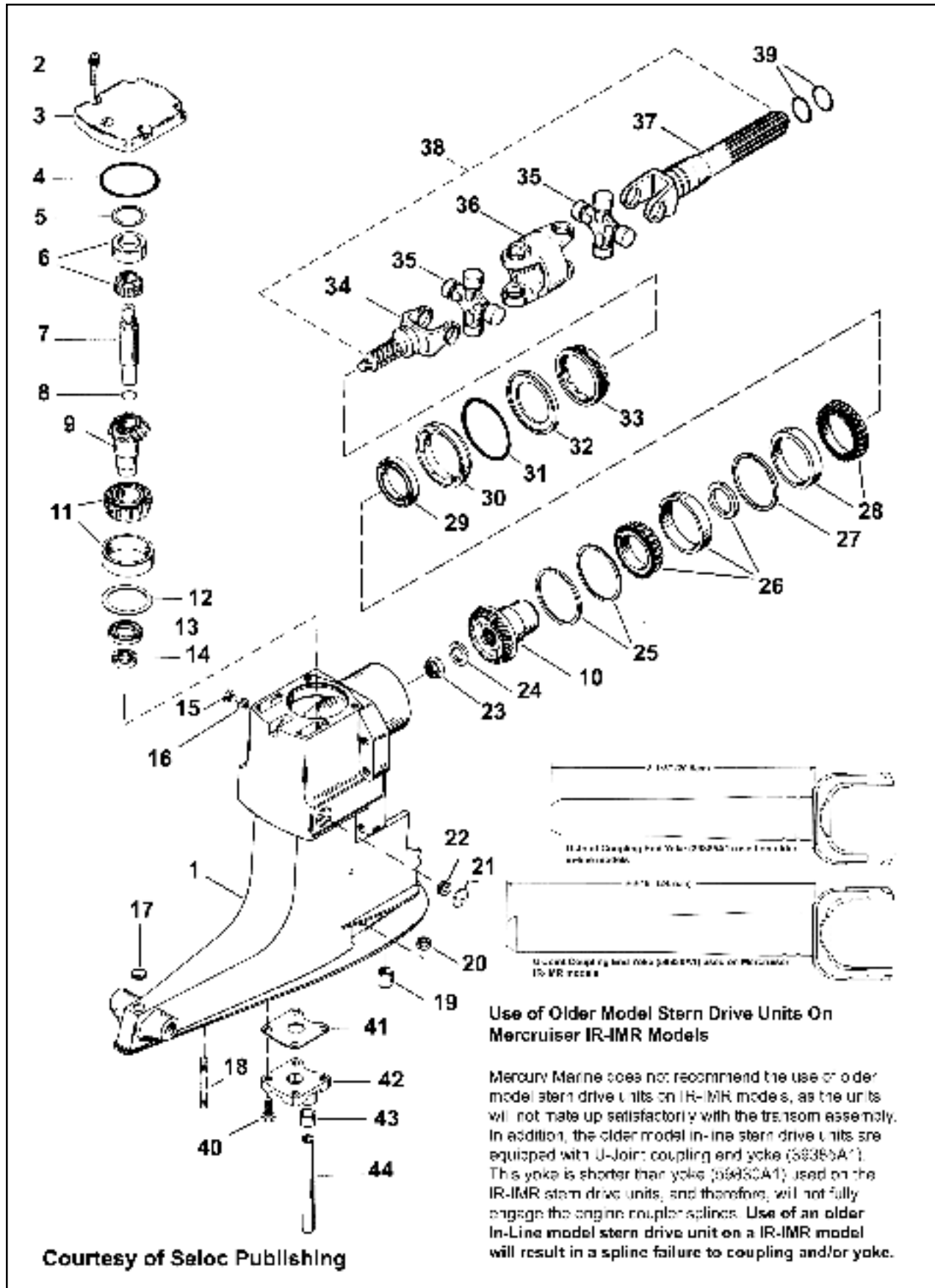


MERCUISER

I/I-R/MR/ALPHA ONE

Drive Shaft Housing Components (Typical)



I/O



MERCUISER I/R/MR/ALPHA ONE Drive Shaft Housing Components (Typical)

	Description	O.E. #	Sierra #	AP #
1.	Upper Gear Housing	—	N/A	N/A
2.	Screw, Top Cover	10-98794	18-3231	—
3.	Top Cover	94998A2	18-2381	—
4.	O-Ring, Top Cover	25-32546	* 18-7161	218
5.	Shim, Bearing Cup to Top Cover	15-45691A1	18-2283	2471
6.	Tapered Roller Bearing	31-61100A1	18-1165	572
7.	Upper Drive Shaft	45-55796	18-2179	2632
8.	O-Ring, Upper Drive Shaft	25-55801	* 18-7445	229
9./10.	Upper Unit Gear Set			
	1.5:1	43-18410A2, 46-18411A2	18-2201	1267
	Rebuild Kit	—	18-2256	—
	1.65:1	43-45814A5	18-2203	13063
	Rebuild Kit	—	18-2257	13078
	1.84:1	43-75325A3	18-2204	13064
	Rebuild Kit	—	18-2258	13079
	1.98:1	43-55778A3	18-2205	13065
	Rebuild Kit	—	18-2259	13080
11.	Tapered Roller Bearing	31-35990A1	18-1161	1901
12.	Shim Kit, Bearing Cup to Drive Shaft Housing	15-36178A1	18-2293	2469
13.	Oil Seal, Upper Drive Shaft Housing	26-32511	* 18-2049	193
14.	Oil Seal, Lower Drive Shaft Housing	26-96503	* 18-2056	167
15.	Vent Screw	10-79953A2	18-2244	2686
16.	Gasket, Gear Housing Drain Screw	12-19183, 12-20260	* 18-2945	2108
17.	Plug, Trim Tab Hole	19-47579	18-3232	—
18.	Stud, Drive Shaft Housing (4)	—	N/A	N/A
19.	Bushing, Drive Shaft Housing	23-32632	18-3236	—
20.	Nut, Gear Housing Stud (3)	11-13439-1	18-2362	5164
21.	Welch Plug, Drive Shaft Housing			
	(7/8" OD)	19-32652	18-4272	13274
	(1 1/4" OD)	19-42682	18-4273	13275
22.	Pipe Plug, Water Pocket	—	N/A	N/A
23.	Nut, Drive Gear to U-Joint	11-22339	18-3713	1817
24.	Washer, Drive Gear to U-Joint Nut	12-45810	18-3712	2716
25.	Shim Kit, Drive Gear	15-35980A1	18-2292	2468
26.	Bearing Kit	31-35988A2, A12	18-1160	571
27.	Spacer (comes with kit)	31-35988A2, A12	18-1160	571
28.	Roller Bearing (comes with kit)	31-35988A2, A12	18-1160	571
29.	Oil Seal	26-64893	* 18-2003	3808
30.	Carrier Assembly Oil Seal	66081A2	18-0577	3806
31.	O-Ring	25-70937	* 18-7169	212
32.	Ring, Roller Bearing Retainer	35983	18-4296	2724
33.	Retaining Nut Drive Shaft Housing	816811-1	18-3752	2673
34.	Yoke Assembly	46020T	18-2125	3800
35.	Heavy Duty U-Joint	75832A2	18-2104	—
36.	Center Socket	39383T	18-2128	—
37.	U-Joint Shaft Coupler	59830A1	18-2146	2421
38.	Drive Shaft	59830A5	18-9218	—
39.	O-Ring	25-25439	* 18-7153	203
40.	Screw, Water Pocket Cover to Drive Shaft Housing	10-28668	18-3229	2118
41.	Gasket, Water Pocket Cover	27-55810	* 18-0894	369
42.	Water Pocket Cover	—	NSS	NSS
43.	Bushing, Water Pump Housing	26-38970	* 18-3110	187
44.	Water Tube	32-54236	18-3220	13164

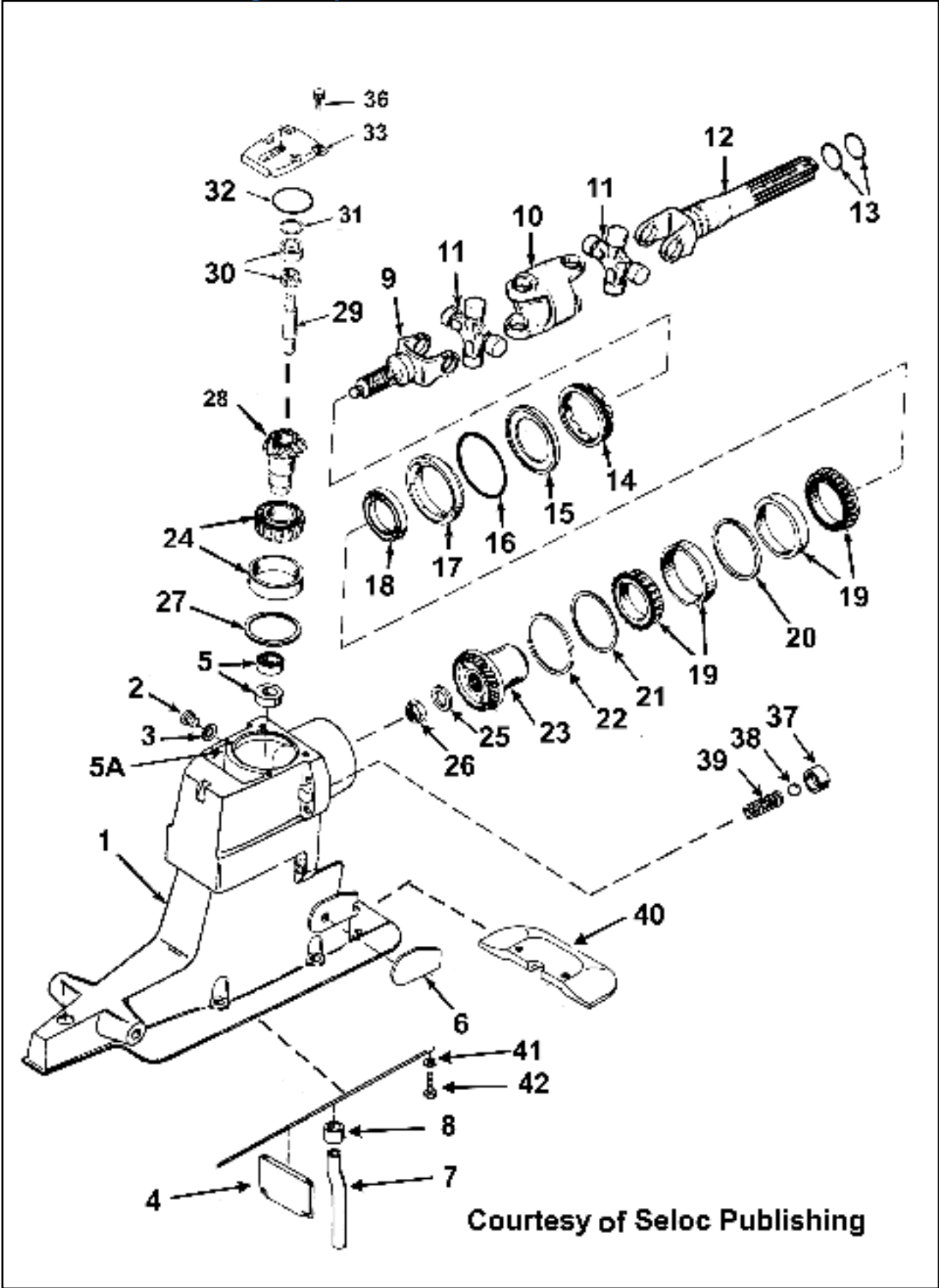
Items 41, 42, 43 and 44 makeup 18-3219 Water Housing Kit

* Included in Seal Kit 18-2648 (Not Pictured)

N/A Not Available

I/O

MERCUISER
ALPHA ONE/GEN II
Drive Shaft Housing Components



Courtesy of Seloc Publishing

1/0



MERCUISER ALPHA ONE/GEN II

Drive Shaft Housing Components

	Description	O.E. #	Sierra #	AP #
1.	Drive Shaft Housing	—	N/A	N/A
2.	Screw	10-79953A2	18-2244	N/A
3.	Washer	12-19183, 12-20260	* 18-2945	2108
4.	Filler Wall	—	N/A	N/A
5.	Oil Seal	26-66302	* 18-0594	N/A
5A.	Plug	—	N/A	N/A
6.	Wear Pad	—	N/A	N/A
7.	Water Tube	32-860220	18-3221	—
8.	Seal	—	N/A	—
9.	Yoke, Gear End	46020T	18-2125	3800
10.	Socket, Center	39383T	18-2128	—
11.	Cross and Bearing	—	—	—
	D469859 - F679999	75832A2	18-2104	—
	F680000 & UP	805536A2	18-2097	13043
12.	Yoke, Coupling End	59830A1	18-2146	2421
13.	O-Ring (2 per)	25-25439	* 18-7153	203
	25-35027	18-7117	248
14.	Retaining Nut	—	18-3752	N/A
15.	Ring	—	18-4296	N/A
16.	O-Ring	25-70937	* 18-7169	212
17.	Carrier Assembly (Set)	66081A2	18-0577	3806
18.	Oil Seal	26-68493	18-2003	3808
19.	Roller Bearing Kit (D469859 - K999999)	31-35988A2, A12	18-1160	571
20.	Cup Spacer (Included with)	31-35988A2, A12	18-1160	571
21.	Shim	15-35980A1	18-2292	2468
22.	Shim	15-71013	18-2296	2474
23.	Upper Unit Gear Set ① (Up to s/n OK999999)			
	1.5:1	43-18410A2, 43-18411A2	18-2201	1267
	Rebuild Kit	—	18-2256	—
	1.65:1	43-45814A5	18-2203	13063
	Rebuild Kit	—	18-2257	13078
	1.84:1	43-75325A3	18-2204	13064
	Rebuild Kit	—	18-2258	13079
	1.98:1	43-55778A3	18-2205	13065
	Upper Unit Gear Set 1.47:1(OL100040 & Up)	43-853641AZ	18-6351	—
	1.62:1 & 2.0:1	43-853640AZ	18-6350	—
	1.81:1	43-853643AZ	18-6353	—
	1.94 & 2.4:1	43-853642AZ	18-6352	—
24.	Roller Bearing (1.47:1 ratio only)	31-35990A1	18-1161	1901
25.	Washer	12-45810	18-3712	2716
26.	Nut	11-22339	18-3713	1817
27.	Shim	15-36178A1	18-2293	2469
28.	Driven Gear ①			
	1.5:1	43-18410A2, 43-18411A2	18-2201	1267
	Rebuild Kit	—	18-2256	—
	1.65:1	43-45814A5	18-2203	13063
	Rebuild Kit	—	18-2257	13078
	1.84:1	43-75325A3	18-2204	13064
	Rebuild Kit	—	18-2258	13079
	1.98:1	43-55778A3	18-2205	13065
29.	Drive Shaft, Upper (F680000 & Up)	45-55796-1	18-2324	2633
30.	Bearing Assembly			
	F680000 & UP (small bearing)	31-32575A1	18-1179	13036
	D494569 - F679999 (large bearing)	31-61100A1	18-1165	572
31.	Shim			
	D494569 - F679999	15-45691A1	18-2283	2471
	F680000 & UP	15-32563A1	18-2282	—
32.	O-Ring	25-32546	* 18-7161	218
33.	Cover Assembly, Top (F680000 & UP)	828692A1	18-2382	—
36.	Screw	10-98794	18-3231	—
37.	Oil Seal (Included in kit)	24-17997A1	18-2715 KIT	2382 KIT
38.	Ball (Included in kit)	24-17997A1	18-2715 KIT	2382 KIT
39.	Spring (Included in kit)	24-17997A1	18-2715 KIT	2382 KIT
40.	Anodic Plate Assembly	821629A1	18-6080	—
41.	Lockwasher	—	N/A	N/A
42.	Screw	—	N/A	N/A

* Included in Seal Kit 18-2644/AP# 3807

① Sold in sets only. For proper gear ratio selection, consult a service manual.

N/A Not Available

